



**YOUR LIFE  
YOUR WAY<sup>SM</sup>**

**GUIDE TO MATHER PLACE**



# WELCOME TO MATHER PLACE

Take a quick peek inside our vibrant community and discover the many possibilities that await.

- 3 Maintenance-Free Living
- 4 A Well-Deserved Lifestyle
- 5 Repriorment™ Living
- 6 Amenities
- 7 Restaurants
- 8 On-Site Resources
- 9 Community Area Plan
- 10 Featured Floor Plans
- 16 Programs & Services
- 17 Financial Control
- 18 Compare the Value
- 19 A Mather Residence
- 20 Explore the Possibilities





## MAINTENANCE-FREE LIVING

# THE HEART OF THE NORTH SHORE

You've built an extraordinary life—and after years of hard work, you've earned the right to enjoy it. At Mather Place, a boutique rental community in Wilmette, Illinois, for those 62 and better, the life you've built continues, but in a worry-free way that lets you focus on what's most important to you.

Enjoy the changing seasons without shoveling snow, raking leaves, or cutting grass. Once you've freed yourself from the chores and the upkeep, you can reinvest yourself in what really matters: friends, family, and the many things you love most about life. The only thing you'll regret is not having moved here sooner.



## A WELL-DESERVED LIFESTYLE

# STRESS A LITTLE LESS, EXPLORE A LITTLE MORE

At Mather Place, the many familiar burdens of running a household are completely taken care of: housekeeping, repairs, maintenance, and more. You've worried about those things long enough. Now you can fill your days exploring all the North Shore has to offer—a variety of restaurants, Westfield Old Orchard shopping mall, beautiful gardens and parks, the North Shore Center for the Performing Arts, and the tranquility of nearby Lake Michigan.

With the routine details of everyday life covered, all you have to do is decide what's next.

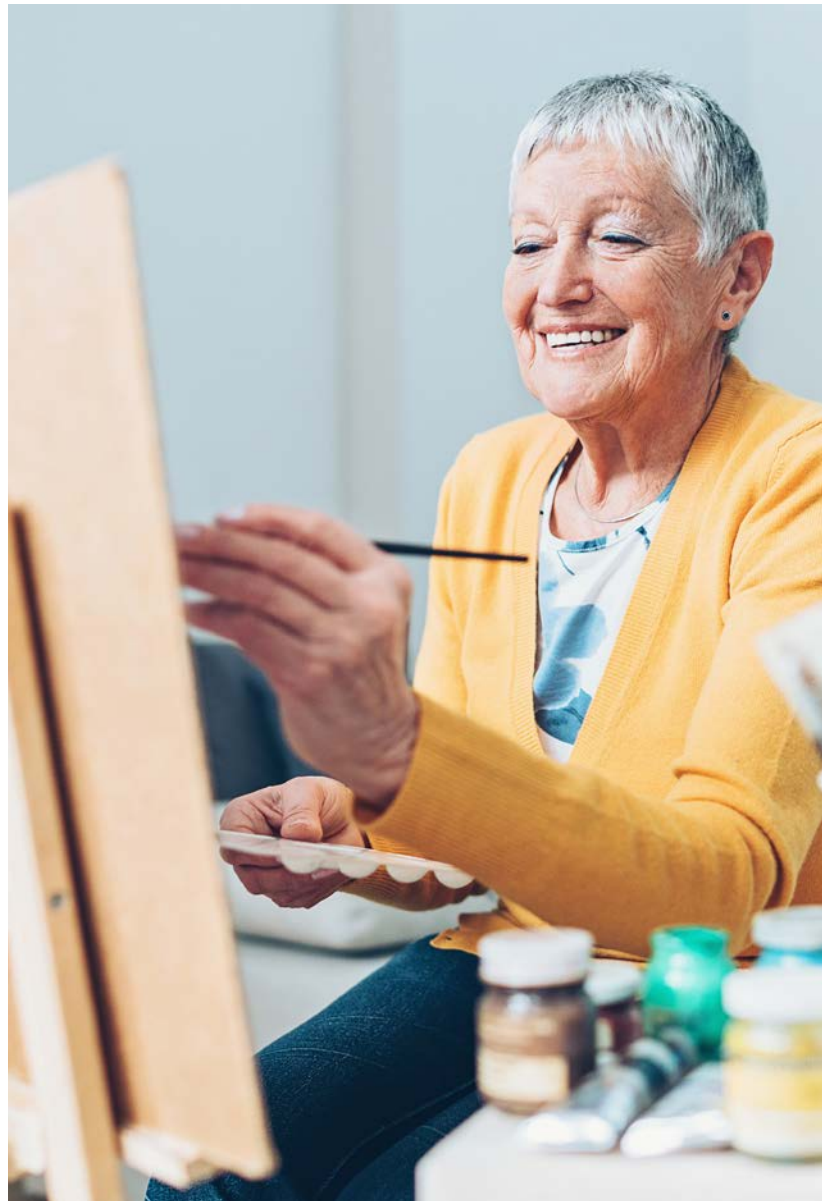


## REPRIORMENT™ LIVING

# DELIGHT IN THE DAY-TO-DAY

Go ahead—structure your time in the way you like to make every day extraordinary. At Mather Place, we call it **Repriorment™**—not retirement. It means discovering the joy of new directions, and having the time to focus on the things that matter most to you. It means doing the things you *want* to do, not just the things you *have* to do.

Mather Place offers many ways to *Reprior*, from catching up on a movie in our Reel Room to inviting friends in for lunch or a game of bridge.



## AMENITIES

# UNCOMMON SPACES

At Mather Place, there are so many things to explore and discover. Our community features a cozy library, indoor pool, art studio, and beautiful gardens that will take you to where you're simply in the moment. Take a dip, dip a brush, or just breathe in the joy of living Your Life Your Way.<sup>SM</sup>

Dive into endless opportunities to find new talents and take up a new hobby. Try your hand at projects from basket coiling to paper marbling to painting and drawing. Or stay active in our fitness center, take a stroll on our walking paths, or relax in our spa and salon. The choice is yours.



## RESTAURANTS

# RELISH THE FLAVORS

Each day is highlighted by culinary experiences that go beyond the expected. Our restaurants, Patent's Place and Alonzo's, will delight you with daily and seasonal specialties such as roasted rack of lamb, fresh grilled salmon, and pasta fresca. And our delectable desserts will satisfy your sweet tooth.

Patent's Place is the perfect spot to stop in for coffee before a morning class, while Alonzo's offers an elegant space to gather for dinner with friends and family. Enjoy al fresco dining at Burnham's, our picturesque patio where you can satisfy your craving while relaxing in the sun.



## ON-SITE RESOURCES

# SEAMLESS SUPPORT WHEN NEEDED

At Mather Place, we have convenient on-site care resources available to support you in daily living.

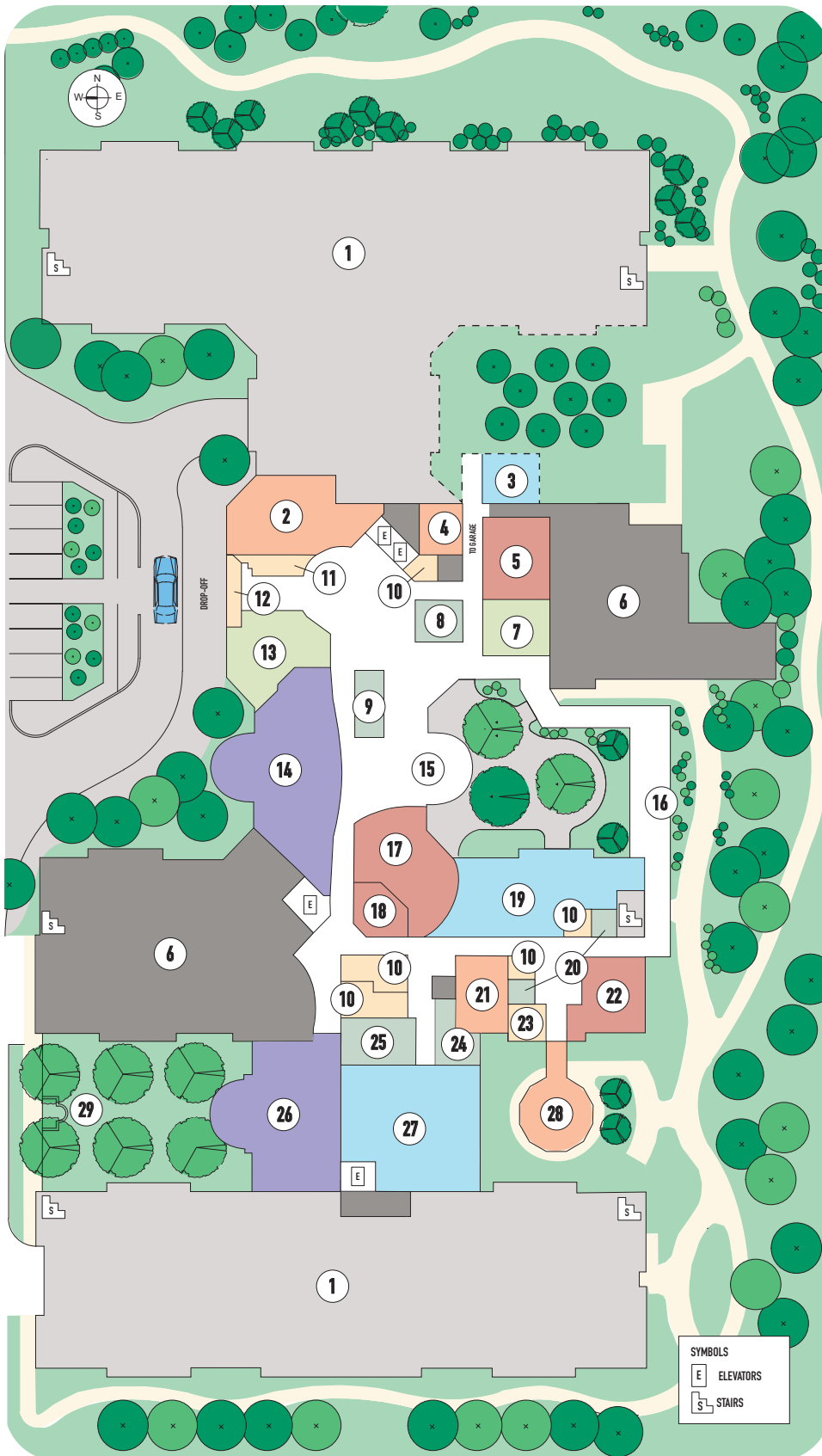
Our Wellness Resource Center, managed by Custom Home Care, offers residents access to a wide range of services, including medication management, routine health screenings, facilitating transitions from hospital stays, and more. And Symbria offers on-site physical, occupational, and speech therapy, as well as pharmacy consultations.

Special packages with Custom Home Care and Symbria are available on a fee-for-service basis\*.

\*Custom Home Care and Symbria are independently owned and operated.



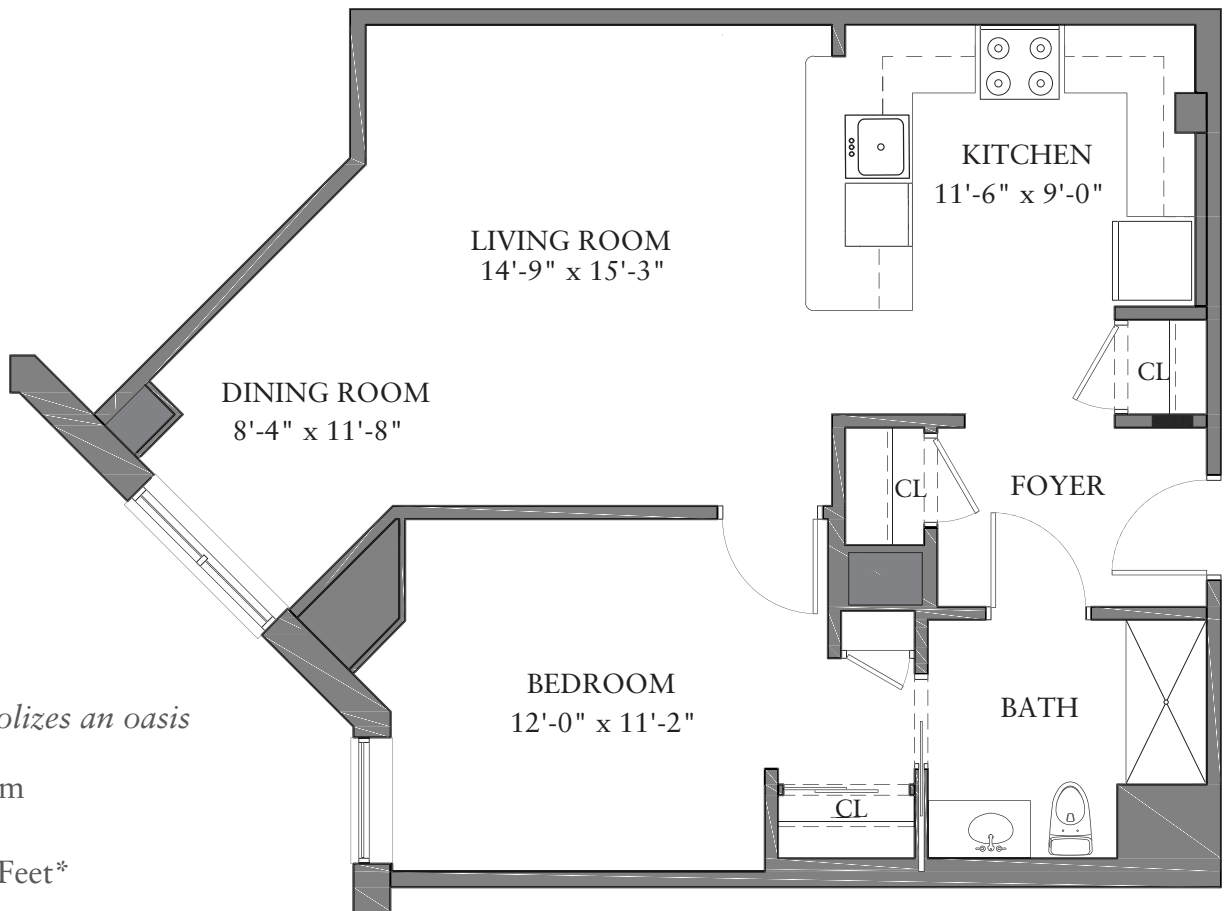
# MATHER PLACE COMMUNITY AREA PLAN



- 1 Parking Garage
- 2 Executive Director & Connections
- 3 Mather Market
- 4 Mail Center
- 5 Reel Room
- 6 Offstage
- 7 Palettes Art Studio
- 8 Men's Restroom
- 9 Women's Restroom
- 10 Office
- 11 Concierge
- 12 Vestibule
- 13 Library
- 14 Alonzo's
- 15 The Fairfield Room
- 16 The Gateway Gallery
- 17 Possibilities I
- 18 Generations
- 19 Get Fit
- 20 Restrooms
- 21 Fitness Studio
- 22 Spa & Salon
- 23 Wellness Resource Center
- 24 Men's Locker Room
- 25 Women's Locker Room
- 26 Patent's Place
- 27 Swimming Pool
- 28 Possibilities II
- 29 Burnham's Patio



## FEATURED FLOOR PLANS



### ASPEN

*Aspen symbolizes an oasis*

One Bedroom  
One Bath  
825 Square Feet\*

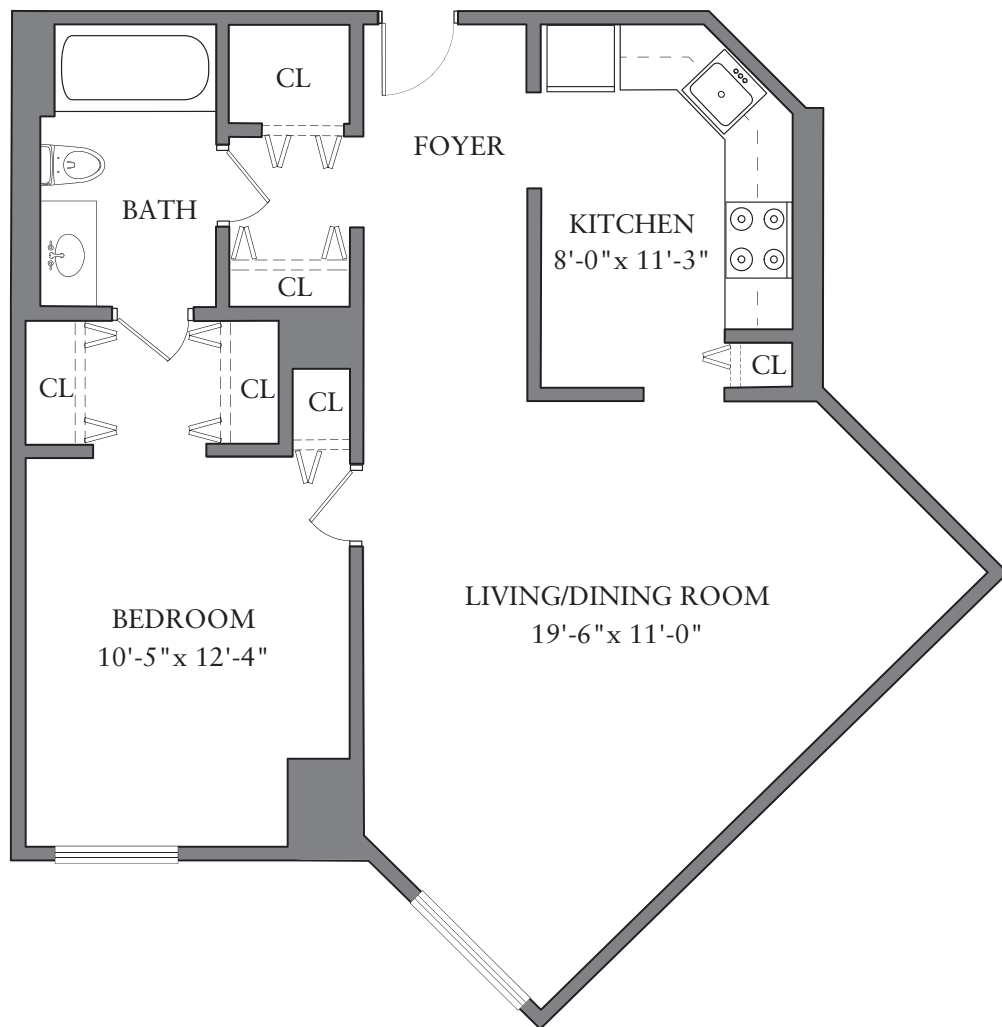
# LINDEN

*Linden symbolizes truth and justice*

One Bedroom

One Bath

672 Square Feet\*



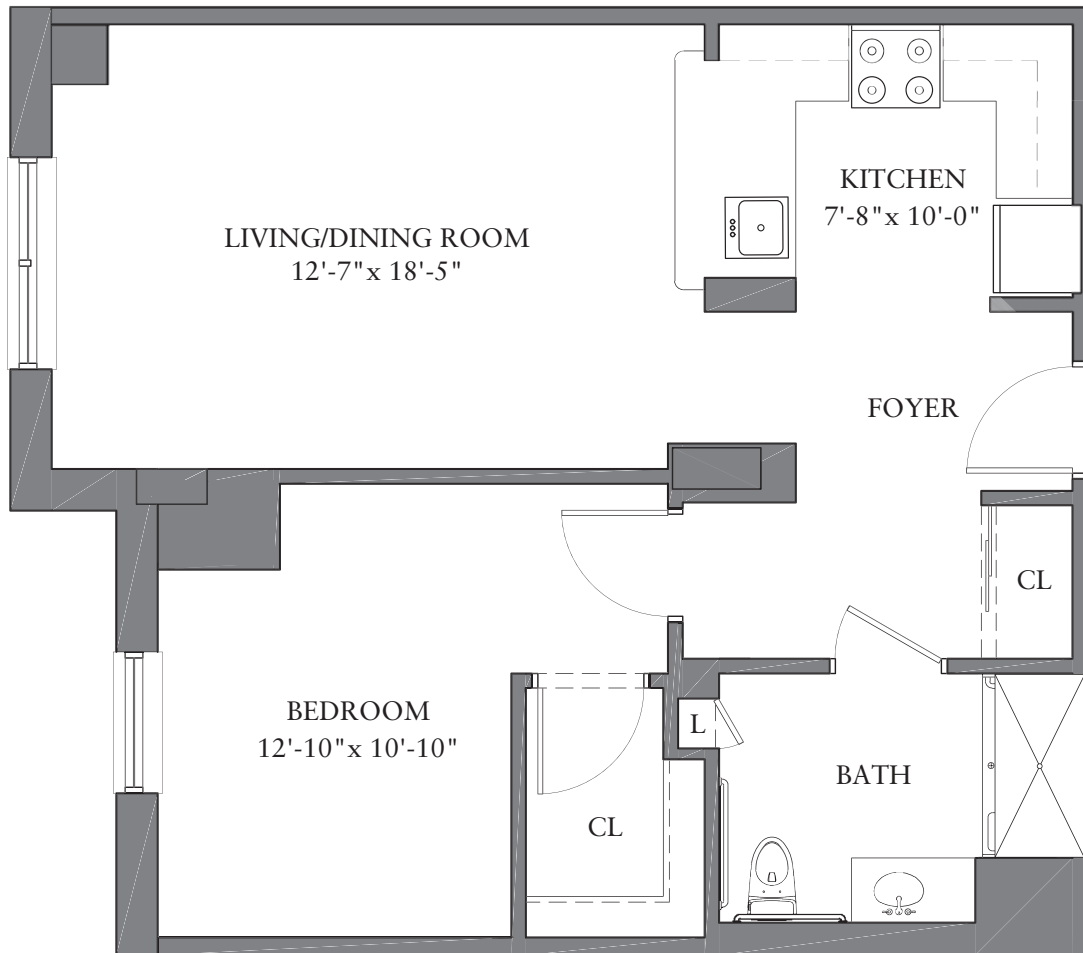
# HOLLY

*Holly symbolizes creativity*

One Bedroom

One Bath

755 Square Feet\*



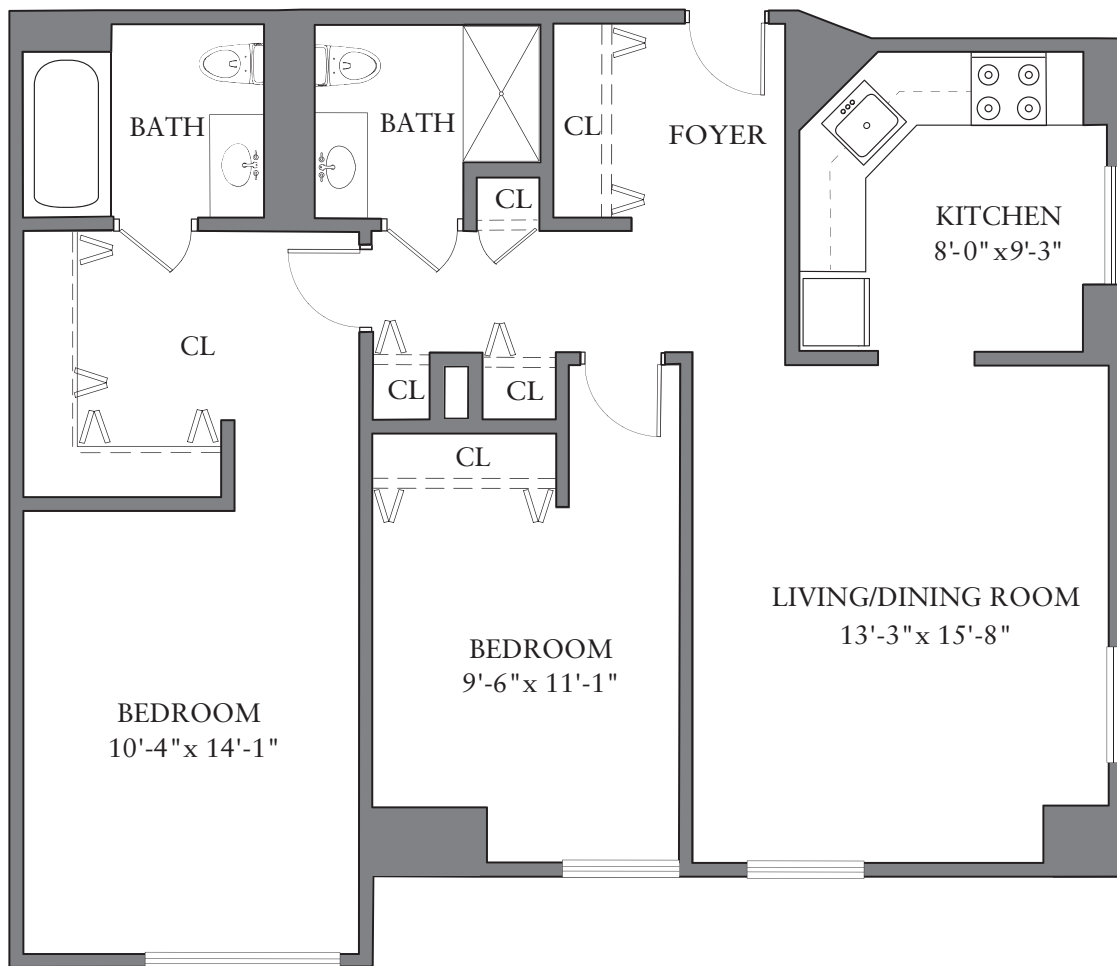
# WILLOW

*Willow symbolizes dreams, wishes of the heart*

Two Bedroom

Two Bath

896 Square Feet\*



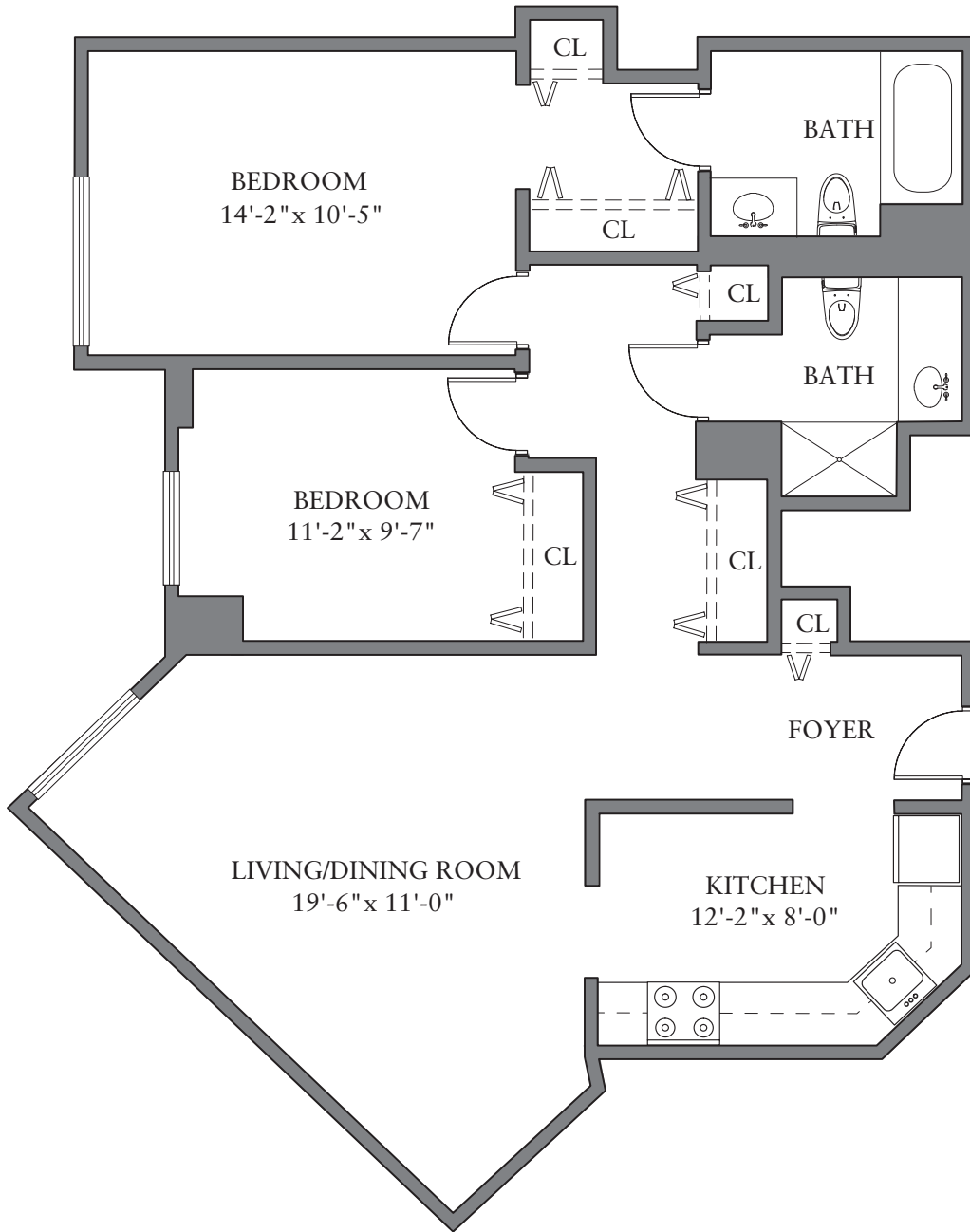
# CEDAR

*Cedar symbolizes protection*

Two Bedroom

Two Bath

952 Square Feet\*



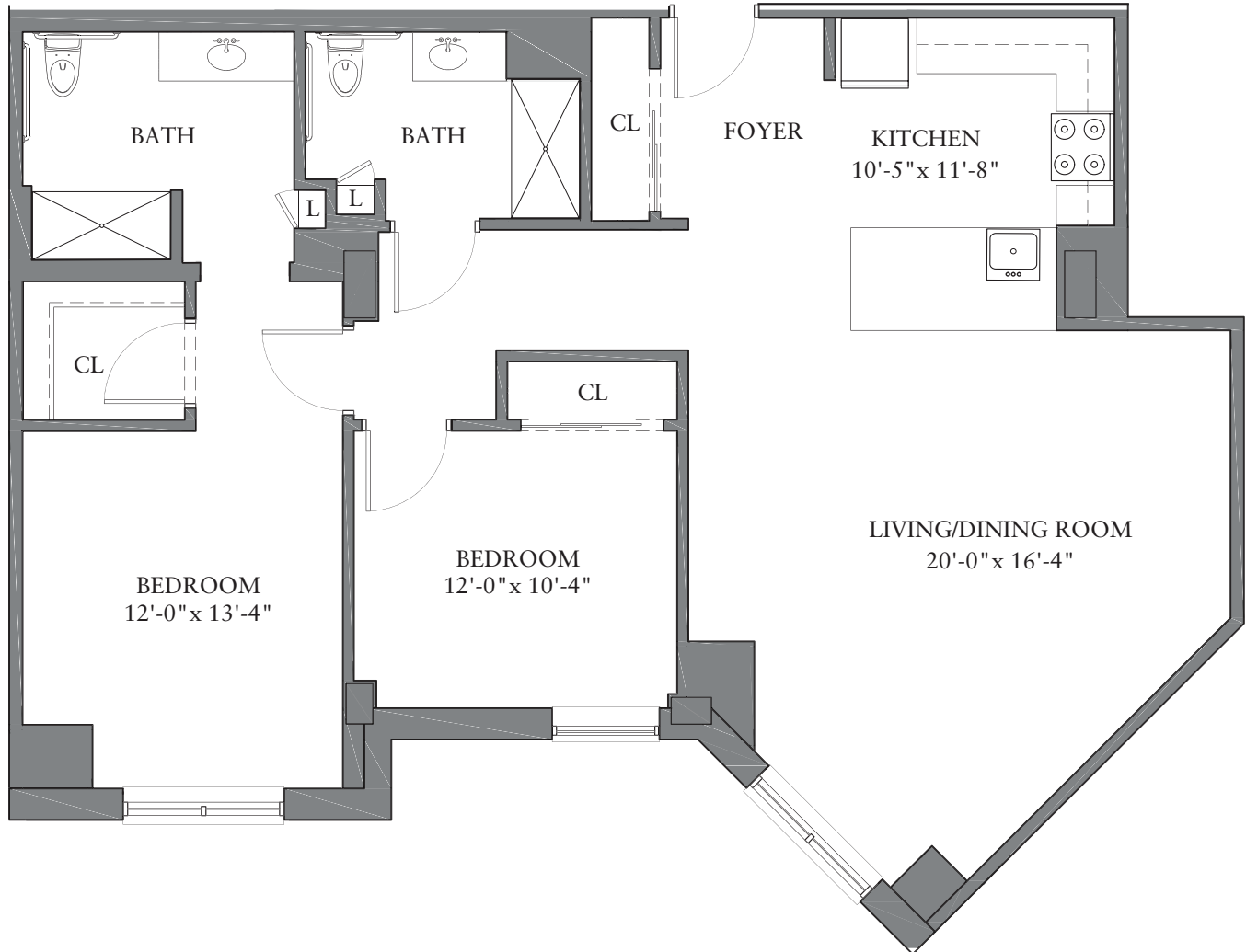
# SPRUCE

*Spruce symbolizes peace*

Two Bedroom

Two Bath

1,275 Square Feet\*





## PROGRAMS & SERVICES

# EXPERIENCE CONNECTED MOMENTS

We proudly offer programs and services that will expand your horizons and provide moments that are truly rewarding.

Days here are energized by enjoyment, companionship, and learning—alone or with others. Entertain guests in the lovely Fairfield Room. Meet a friend for a spirited game of billiards, or join your neighbors for a fitness class. Or find a good book and a comfy seat in the library.

With a wide variety of opportunities catering to nearly every whim, it's remarkably easy to live Your Life Your Way.<sup>SM</sup>





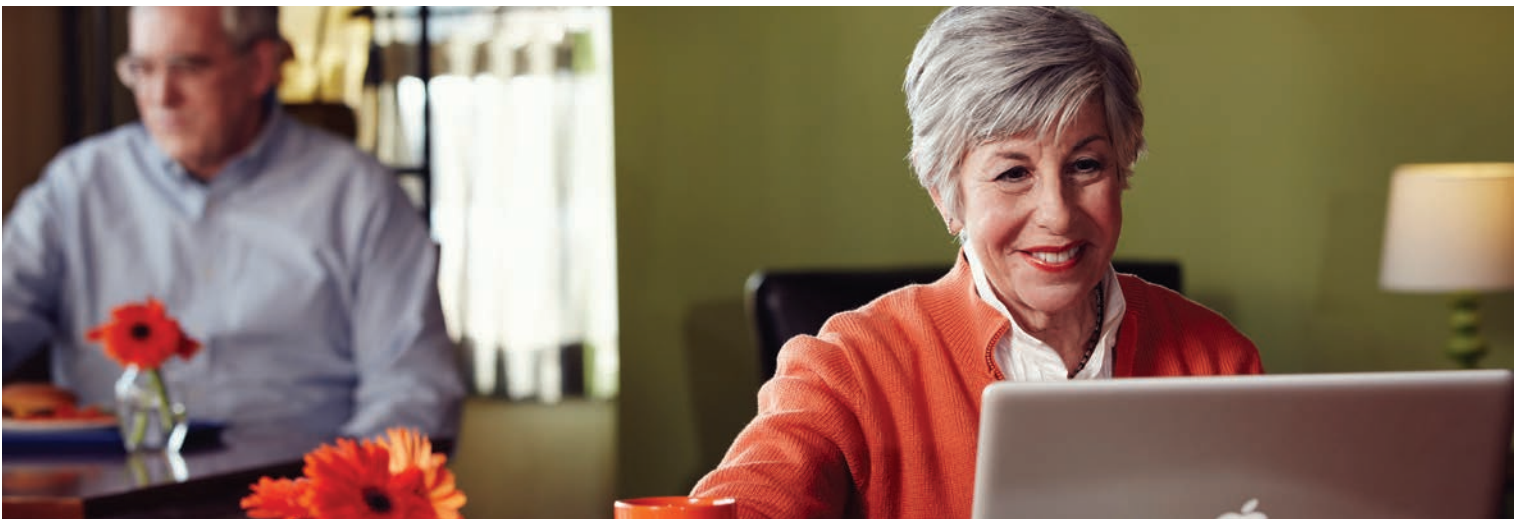
## FINANCIAL CONTROL

# THE BUSINESS OF LIFE, SIMPLIFIED

Mather Place is a rental community where your finances are easier to manage, giving you more control over your budget and your nest egg. Just imagine never paying another property tax, electricity, gas, or home repair bill. It's simple. All you pay is a single, predictable monthly fee.

Here, you can continue to enjoy the comforts of home—without the chores and upkeep. And with reduced home maintenance, you have the freedom to enjoy the retirement (or Repriorment™) you've earned.

It truly is Your Life Your Way.™



## Compare the Value

Use the table below to quickly and easily calculate the incredible value of life at Mather Place.

MONTHLY EXPENSES	CURRENT EXPENSES	MATHER PLACE
Rent/Mortgage and assessments	\$ <input type="text"/>	Included in monthly fees
Basic utilities, including electricity, heat, air conditioning, water, and basic cable	\$ <input type="text"/>	Included in monthly fees
Housecleaning service every week, including laundering of bed linens	\$ <input type="text"/>	Included in monthly fees
Home maintenance, including appliance repair	\$ <input type="text"/>	Included in monthly fees
Landscaping and snow removal	\$ <input type="text"/>	Included in monthly fees
Real estate taxes	\$ <input type="text"/>	Included in monthly fees
A Culinary Club Plan for meals, beverages, to-go orders, and more	\$ <input type="text"/>	Included in monthly fees
A variety of inspiring social, educational, and cultural programs	\$ <input type="text"/>	Included in monthly fees
Fitness center and indoor swimming pool	\$ <input type="text"/>	Included in monthly fees
Scheduled transportation to shopping and appointments	\$ <input type="text"/>	Included in monthly fees
24-hour concierge service and Arial® notification pendants and pull cords	\$ <input type="text"/>	Included in monthly fees
<b>TOTAL COST</b>	\$ <input type="text"/>	<b>ONE FLAT, MONTHLY SERVICE FEE</b>



## A MATHER RESIDENCE

# WHO IS MATHER?

Mather is a unique, nondenominational not-for-profit organization that was founded in 1941. Dedicated to developing and implementing Ways to Age Well<sup>SM</sup>, we create programs, places, and residences for today's young-at-heart older adults.

Our founder, Alonzo Mather, was more than a successful entrepreneur—he was a well-regarded humanitarian. From building what was once the tallest skyscraper in Chicago, to inventing the first humane freight car for livestock, to funding one of the first Continuing Care Retirement Communities (now called Life Plan Communities) in the nation, his past fuels our future. Mather is headquartered in Evanston, Illinois. To learn more, find your way to [mather.com](https://mather.com).



## EXPLORE THE POSSIBILITIES

Contact us for more information on Mather Place, or to schedule a personal visit.



(847) 256.9555



2801 Old Glenview Road  
Wilmette, IL 60091



[matherplacewilmette.com](http://matherplacewilmette.com)



[facebook.com/matherplace](https://facebook.com/matherplace)

